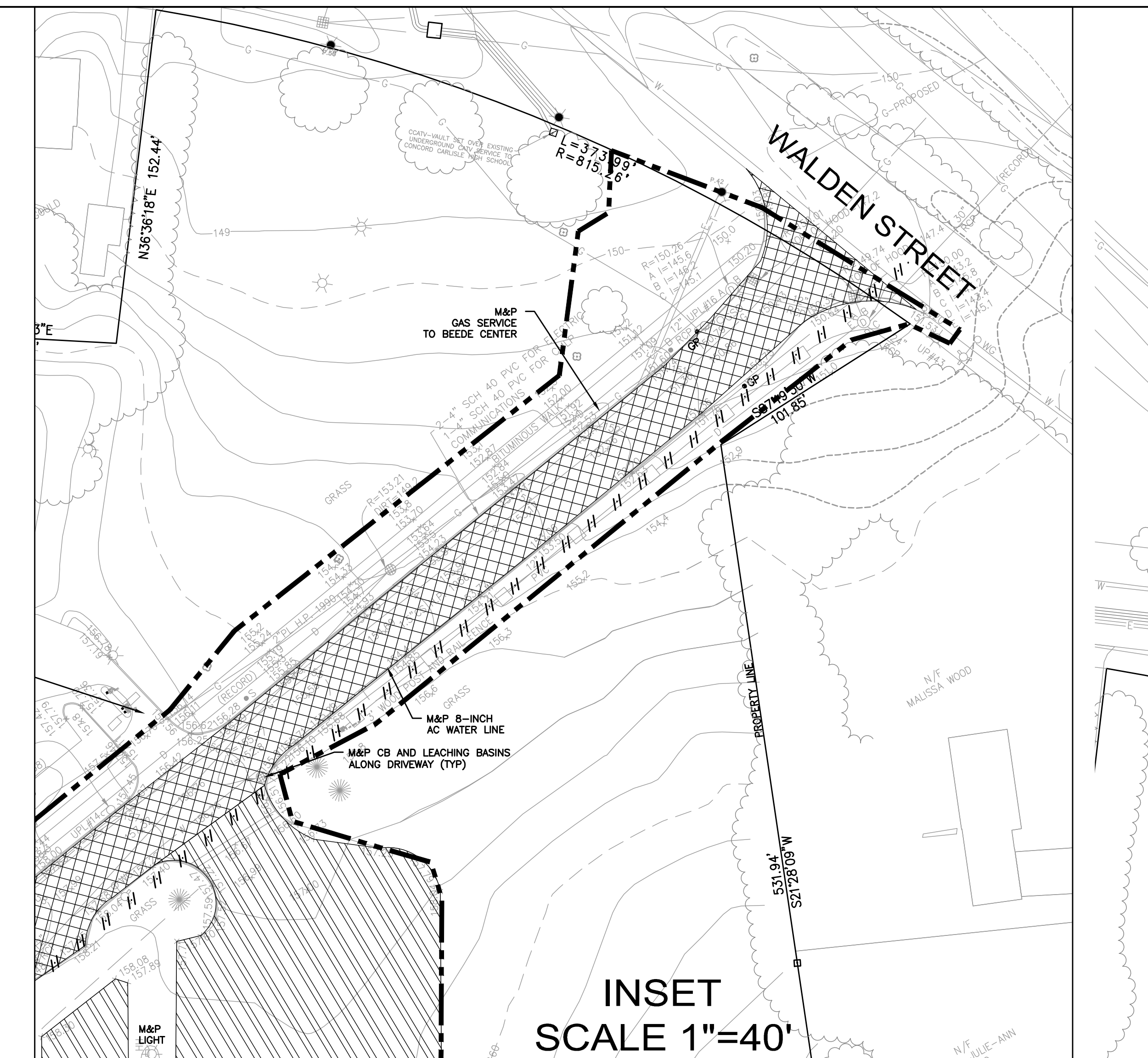


- SITE UTILITY DEMOLITION NOTES:**
- CONTRACTOR SHALL PROTECT AND MAINTAIN ALL SITE UTILITIES WITHIN LIMIT OF WORK, UNLESS OTHERWISE NOTED.
  - SEE SHEET C-100 FOR GENERAL DEMOLITION NOTES, LEGEND, ABBREVIATIONS, AND GENERAL NOTES.
  - SEE SECTION 311000, SITE CLEARING, FOR SITE PREPARATION AND DEMOLITION REQUIREMENTS.
  - SEE ARCHITECTURAL PLAN FOR LIMITS OF CONSTRUCTION FENCE.
  - THE CONTRACTOR SHALL STACK ITEMS AT A LOCATION DESIGNATED BY THE TOWN OF CONCORD DPW/ENGINEERING DEPARTMENT OR SCHOOL FACILITY DIRECTOR.
  - SEE LANDSCAPE PLAN FOR TREE PROTECTION.
  - REFER TO ARCHITECTURAL PLANS FOR BUILDING DEMOLITION.
  - CONTRACTOR SHALL REMOVE AND STACK EXISTING VERTICAL GRANITE CURB. CURBING TO BE RE-USED IN LANDSCAPE AS INDICATED ON THE LANDSCAPING PLAN.

- REMOVE & STORE EXISTING PAVEMENT FOR NEW RECLAIMED ASPHALT BASE. PAVEMENT STORAGE LOCATION TO BE DETERMINED BY THE TOWN OF CONCORD DPW/ENGINEERING DEPARTMENT OR SCHOOL FACILITY DIRECTOR. FULL DEPTH REMOVAL PAVEMENT AND BASE.
- REMOVE & DISPOSE WALKWAYS, CONCRETE PLANTERS, BENCHES, LANDSCAPING INCLUDING TREES, SHRUBS, MULCH, AND TIMBER EDGING, AND ANY CATCH BASIN/LEACHING BASIN, AND UTILITIES.
- MILL 1 1/4" EXISTING DRIVEWAY TOP COURSE SIDEWALK AND ASPHALT CURBING. MILLED ASPHALT SHALL BE USED FOR NEW RECLAIMED ASPHALT BASE.
- ASPHALT AT EXISTING PARKING LOT TO REMAIN. LIMITS OF ASPHALT PARKING TO REMAIN SHOULD BE DETERMINED IN THE FIELD WITH CONTRACTOR, OWNER REPRESENTATIVE AND THE TOWN OF CONCORD ENGINEER DEPARTMENT.
- REMOVE & DISPOSE
- ABANDON IN PLACE
- REMOVE AND SAVE
- MAINTAIN AND PROTECT



Architect:  
**omr architects inc**  
 543 Massachusetts Ave, West Acton, MA 01720  
 www.omr-architects.com t: 978.264.0160

Consulting Engineer:  
  
 www.nitcheng.com  
 180 Lincoln Street, Suite 200  
 Boston, MA 02111-2609  
 T: (617) 338-0983  
 F: (617) 338-0172

Registration:  
**DESIGN DEVELOPMENT SUBMISSION**

Project Name and Address:  
**Concord-Carlisle Regional High School**  
 500 Walden Street, Concord, MA 01742

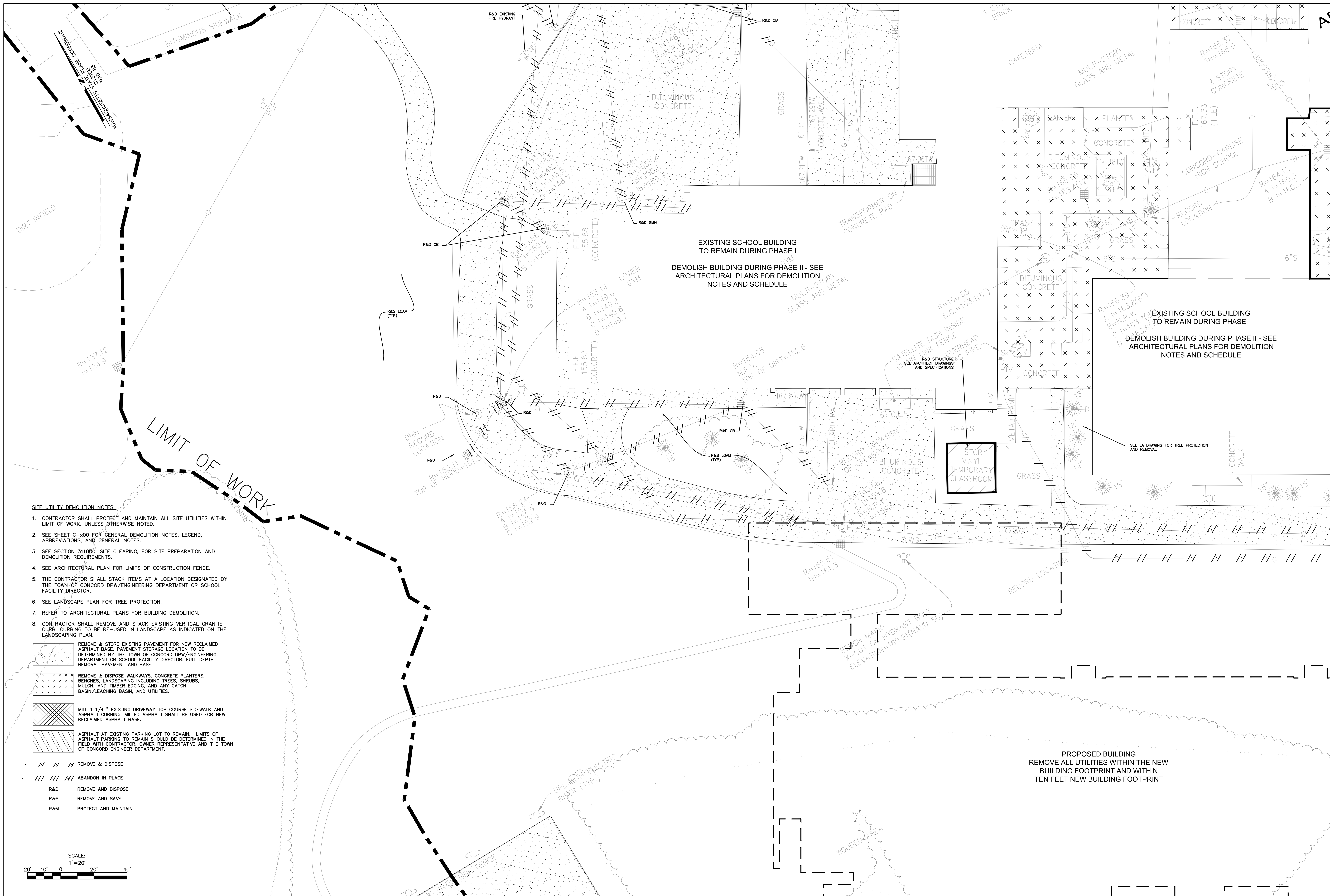
Issue Submissions:

No.	Date	Description

Title:  
**SITE DEMOLITION PLAN**

Date: August 15, 2012  
 Scale: 1" = 40'  
 Drawn: SV  
 Checked: SAB

Project No.: 1102.00  
 Drawing No.: **C-200**  
 © omr architects inc

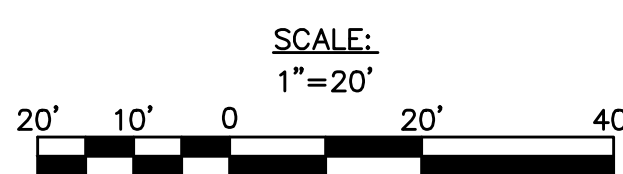


**SITE UTILITY DEMOLITION NOTES:**

- CONTRACTOR SHALL PROTECT AND MAINTAIN ALL SITE UTILITIES WITHIN LIMIT OF WORK, UNLESS OTHERWISE NOTED.
- SEE SHEET C-x00 FOR GENERAL DEMOLITION NOTES, LEGEND, ABBREVIATIONS, AND GENERAL NOTES.
- SEE SECTION 311000, SITE CLEARING, FOR SITE PREPARATION AND DEMOLITION REQUIREMENTS.
- SEE ARCHITECTURAL PLAN FOR LIMITS OF CONSTRUCTION FENCE.
- THE CONTRACTOR SHALL STACK ITEMS AT A LOCATION DESIGNATED BY THE TOWN OF CONCORD DPW/ENGINEERING DEPARTMENT OR SCHOOL FACILITY DIRECTOR.
- SEE LANDSCAPE PLAN FOR TREE PROTECTION.
- REFER TO ARCHITECTURAL PLANS FOR BUILDING DEMOLITION.
- CONTRACTOR SHALL REMOVE AND STACK EXISTING VERTICAL GRANITE CURB. CURBING TO BE RE-USED IN LANDSCAPE AS INDICATED ON THE LANDSCAPING PLAN.

- REMOVE & STORE EXISTING PAVEMENT FOR NEW RECLAIMED ASPHALT BASE. PAVEMENT STORAGE LOCATION TO BE DETERMINED BY THE TOWN OF CONCORD DPW/ENGINEERING DEPARTMENT OR SCHOOL FACILITY DIRECTOR. FULL DEPTH REMOVAL PAVEMENT AND BASE.
- REMOVE & DISPOSE WALKWAYS, CONCRETE PLANTERS, BENCHES, LANDSCAPING INCLUDING TREES, SHRUBS, MULCH, AND TIMBER EDGING, AND ANY CATCH BASIN/LEACHING BASIN, AND UTILITIES.
- MILL 1 1/4" EXISTING DRIVEWAY TOP COURSE SIDEWALK AND ASPHALT CURBING. MILLED ASPHALT SHALL BE USED FOR NEW RECLAIMED ASPHALT BASE.
- ASPHALT AT EXISTING PARKING LOT TO REMAIN. LIMITS OF ASPHALT PARKING TO REMAIN SHOULD BE DETERMINED IN THE FIELD WITH CONTRACTOR, OWNER REPRESENTATIVE AND THE TOWN OF CONCORD ENGINEER DEPARTMENT.

- REMOVE & DISPOSE
- ABANDON IN PLACE
- R&D REMOVE AND DISPOSE
- R&S REMOVE AND SAVE
- P&M PROTECT AND MAINTAIN



Architect:  
**omr architects inc**  
543 Massachusetts Ave, West Acton, MA 01720  
www.omr-architects.com t: 978.264.0160

Consulting Engineer:  
**Nitach Engineering**  
180 Lincoln Street, Suite 200  
Weston, MA 02157-2020  
T: (617) 338-0063  
F: (617) 338-6172

- Civil Engineering
- Land Surveying
- Transportation Engineering
- Structural Consulting
- Planning
- GIS

Registration:  
**DESIGN DEVELOPMENT SUBMISSION**

Project Name and Address:  
**Concord-Carlisle Regional High School**  
500 Walden Street, Concord, MA 01742

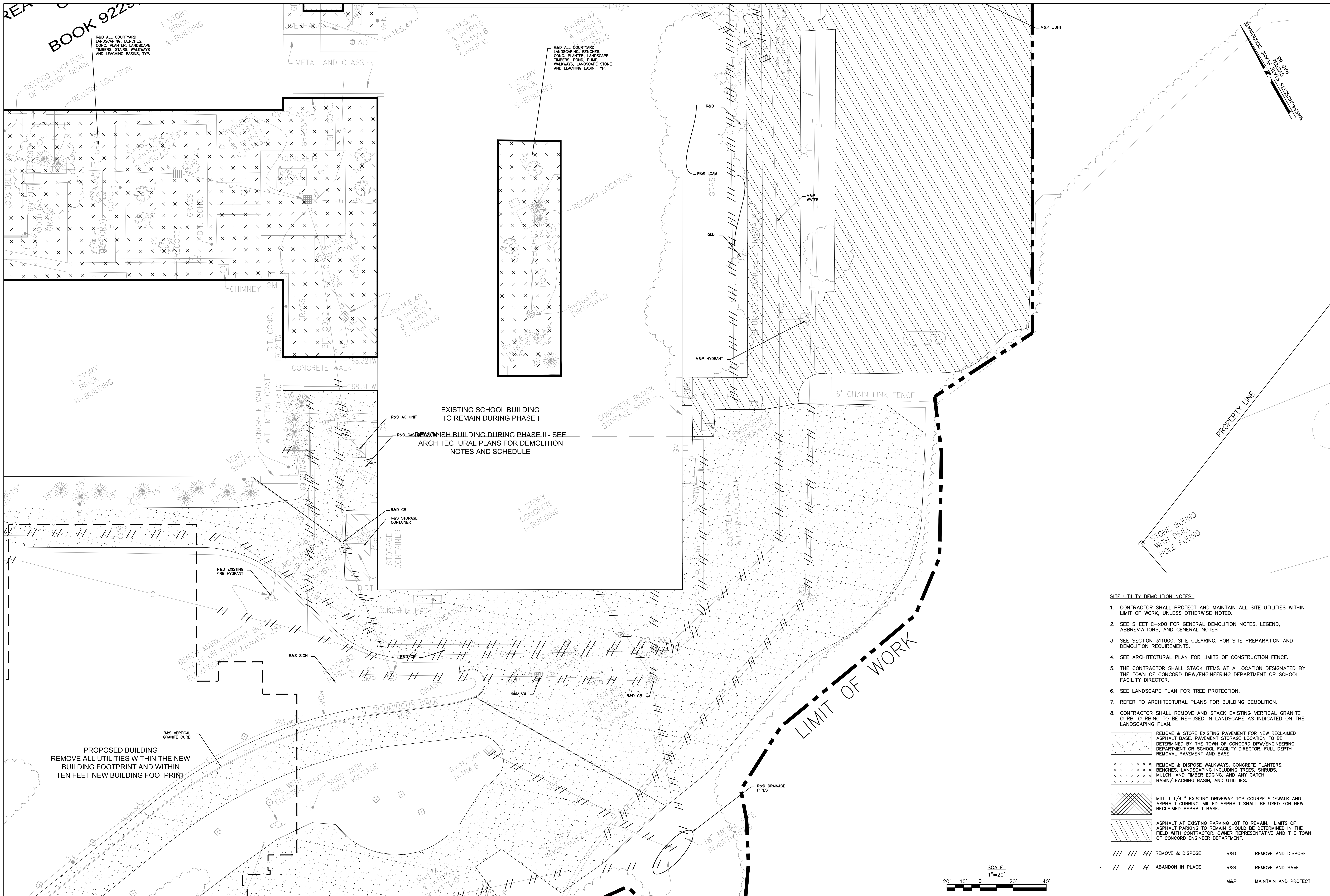
Issue Submissions:

No.:	Date:	Description:

Title:  
**SITE DEMOLITION PLAN**

Date: August 15, 2012 Scale: 1" = 20' Drawn: SV Checked: SAB

Project No.: 1102.00  
Drawing No.: **C-201**  
© omr architects inc

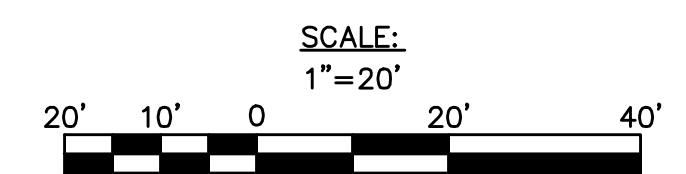


**SITE UTILITY DEMOLITION NOTES:**

- CONTRACTOR SHALL PROTECT AND MAINTAIN ALL SITE UTILITIES WITHIN LIMIT OF WORK, UNLESS OTHERWISE NOTED.
- SEE SHEET C-x00 FOR GENERAL DEMOLITION NOTES, LEGEND, ABBREVIATIONS, AND GENERAL NOTES.
- SEE SECTION 311000, SITE CLEARING, FOR SITE PREPARATION AND DEMOLITION REQUIREMENTS.
- SEE ARCHITECTURAL PLAN FOR LIMITS OF CONSTRUCTION FENCE.
- THE CONTRACTOR SHALL STACK ITEMS AT A LOCATION DESIGNATED BY THE TOWN OF CONCORD DPW/ENGINEERING DEPARTMENT OR SCHOOL FACILITY DIRECTOR.
- SEE LANDSCAPE PLAN FOR TREE PROTECTION.
- REFER TO ARCHITECTURAL PLANS FOR BUILDING DEMOLITION.
- CONTRACTOR SHALL REMOVE AND STACK EXISTING VERTICAL GRANITE CURB. CURBING TO BE RE-USED IN LANDSCAPE AS INDICATED ON THE LANDSCAPING PLAN.

- REMOVE & STORE EXISTING PAVEMENT FOR NEW RECLAIMED ASPHALT BASE. PAVEMENT STORAGE LOCATION TO BE DETERMINED BY THE TOWN OF CONCORD DPW/ENGINEERING DEPARTMENT OR SCHOOL FACILITY DIRECTOR. FULL DEPTH REMOVAL PAVEMENT AND BASE.
- REMOVE & DISPOSE WALKWAYS, CONCRETE PLANTERS, BENCHES, LANDSCAPING INCLUDING TREES, SHRUBS, MULCH, AND TIMBER EDGING, AND ANY CATCH BASIN/LEACHING BASIN, AND UTILITIES.
- MILL 1 1/4" EXISTING DRIVEWAY TOP COURSE SIDEWALK AND ASPHALT CURBING. MILLED ASPHALT SHALL BE USED FOR NEW RECLAIMED ASPHALT BASE.
- ASPHALT AT EXISTING PARKING LOT TO REMAIN. LIMITS OF ASPHALT PARKING TO REMAIN SHOULD BE DETERMINED IN THE FIELD WITH CONTRACTOR, OWNER REPRESENTATIVE AND THE TOWN OF CONCORD ENGINEER DEPARTMENT.

- REMOVE & DISPOSE R&D REMOVE AND DISPOSE
- REMOVE AND SAVE R&S REMOVE AND SAVE
- MAINTAIN AND PROTECT M&P MAINTAIN AND PROTECT



Architect:  
**omr architects inc**  
 543 Massachusetts Ave, West Acton, MA 01720  
 www.omr-architects.com t: 978.264.0160

Consulting Engineer:  
  
 www.nitcheng.com  
 180 Lincoln Street, Suite 200  
 Boston, MA 02111-2400  
 T: (617) 338-0083  
 F: (617) 338-0172

Registration:  
**DESIGN DEVELOPMENT SUBMISSION**

Project Name and Address:  
**Concord-Carlisle Regional High School**  
 500 Walden Street, Concord, MA 01742

Issue Submissions:

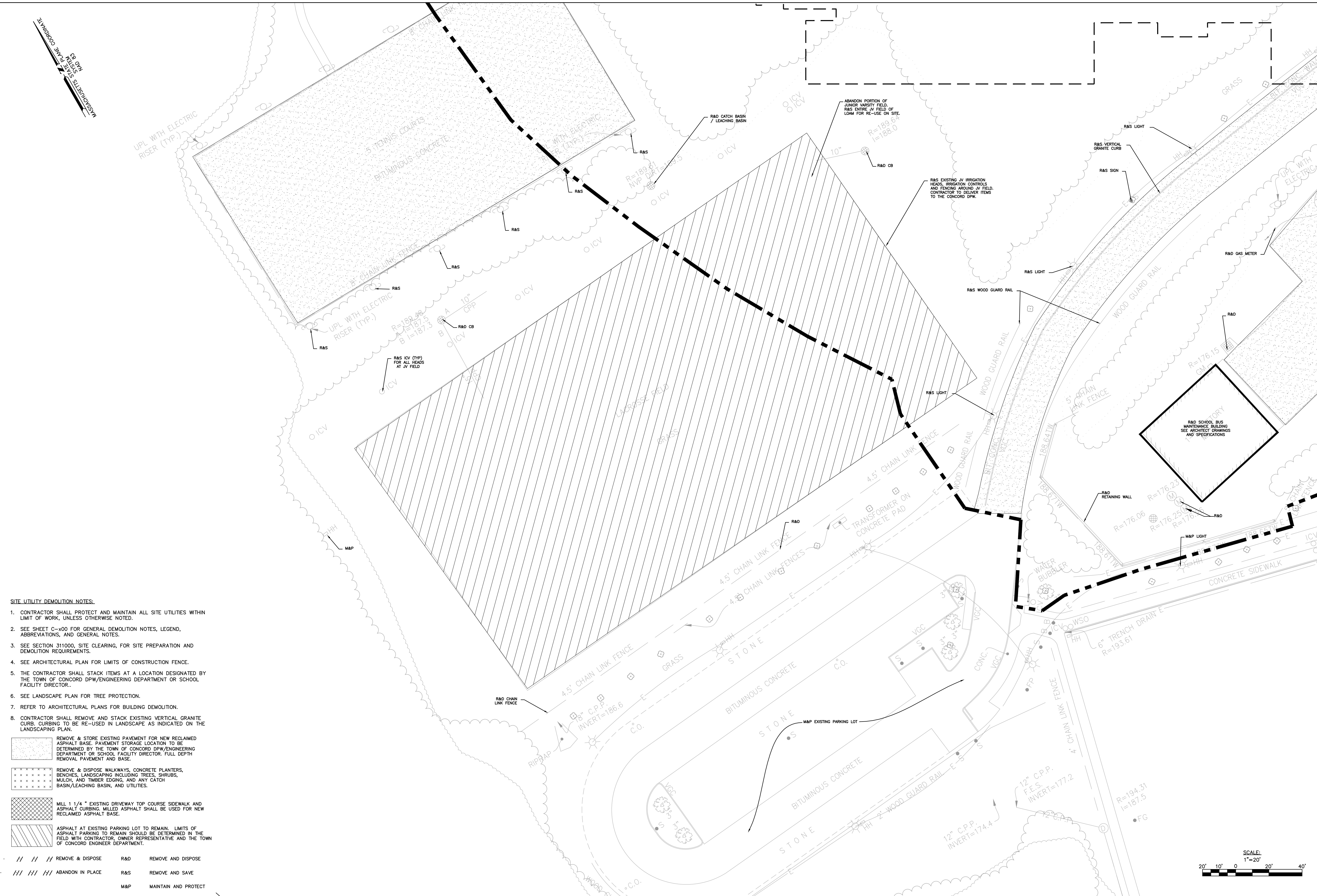
No.:	Date:	Description:

Title:  
**SITE DEMOLITION PLAN**

Date: August 15, 2012 Scale: 1" = 20' Drawn: SV Checked: SAB

Project No.: 1102.00  
 Drawing No.: **C-202**  
 © omr architects inc

FB  
R  
K  
S  
I  
S  
L  
E  
D  
I  
O  
N  
S  
I  
V  
N  
C  
O  
M  
P  
A  
R  
T  
E

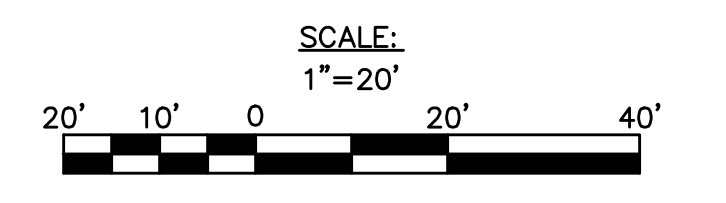


**SITE UTILITY DEMOLITION NOTES:**

- CONTRACTOR SHALL PROTECT AND MAINTAIN ALL SITE UTILITIES WITHIN LIMIT OF WORK, UNLESS OTHERWISE NOTED.
- SEE SHEET C-100 FOR GENERAL DEMOLITION NOTES, LEGEND, ABBREVIATIONS, AND GENERAL NOTES.
- SEE SECTION 311000, SITE CLEARING, FOR SITE PREPARATION AND DEMOLITION REQUIREMENTS.
- SEE ARCHITECTURAL PLAN FOR LIMITS OF CONSTRUCTION FENCE.
- THE CONTRACTOR SHALL STACK ITEMS AT A LOCATION DESIGNATED BY THE TOWN OF CONCORD DPW/ENGINEERING DEPARTMENT OR SCHOOL FACILITY DIRECTOR.
- SEE LANDSCAPE PLAN FOR TREE PROTECTION.
- REFER TO ARCHITECTURAL PLANS FOR BUILDING DEMOLITION.
- CONTRACTOR SHALL REMOVE AND STACK EXISTING VERTICAL GRANITE CURB; CURBING TO BE RE-USED IN LANDSCAPE AS INDICATED ON THE LANDSCAPING PLAN.

- REMOVE & STORE EXISTING PAVEMENT FOR NEW RECLAIMED ASPHALT BASE. PAVEMENT STORAGE LOCATION TO BE DETERMINED BY THE TOWN OF CONCORD DPW/ENGINEERING DEPARTMENT OR SCHOOL FACILITY DIRECTOR. FULL DEPTH REMOVAL PAVEMENT AND BASE.
- REMOVE & DISPOSE WALKWAYS, CONCRETE PLANTERS, BENCHES, LANDSCAPING INCLUDING TREES, SHRUBS, MULCH, AND TIMBER EDGING, AND ANY CATCH BASIN/LEACHING BASIN, AND UTILITIES.
- MILL 1 1/4" EXISTING DRIVEWAY TOP COURSE SIDEWALK AND ASPHALT CURBING. MILLED ASPHALT SHALL BE USED FOR NEW RECLAIMED ASPHALT BASE.
- ASPHALT AT EXISTING PARKING LOT TO REMAIN. LIMITS OF ASPHALT PARKING TO REMAIN SHOULD BE DETERMINED IN THE FIELD WITH CONTRACTOR, OWNER REPRESENTATIVE AND THE TOWN OF CONCORD ENGINEER DEPARTMENT.

// // // REMOVE & DISPOSE R&D REMOVE AND DISPOSE  
 /// /// /// ABANDON IN PLACE R&S REMOVE AND SAVE  
 M&P MAINTAIN AND PROTECT



Architect:

**omr architects inc**

543 Massachusetts Ave, West Acton, MA 01720  
www.omr-architects.com t: 978.264.0160

Consulting Engineer:

**Nitach Engineering**

180 Lincoln Street, Suite 200  
Weston, MA 02157-2020  
T: (617) 338-0083  
F: (617) 338-0172

- Civil Engineering
- Land Surveying
- Transportation Engineering
- Structural Consulting
- Planning
- GIS

Registration:

**DESIGN DEVELOPMENT SUBMISSION**

Project Name and Address:

**Concord-Carlisle Regional High School**  
500 Walden Street, Concord, MA 01742

Issue Submissions:

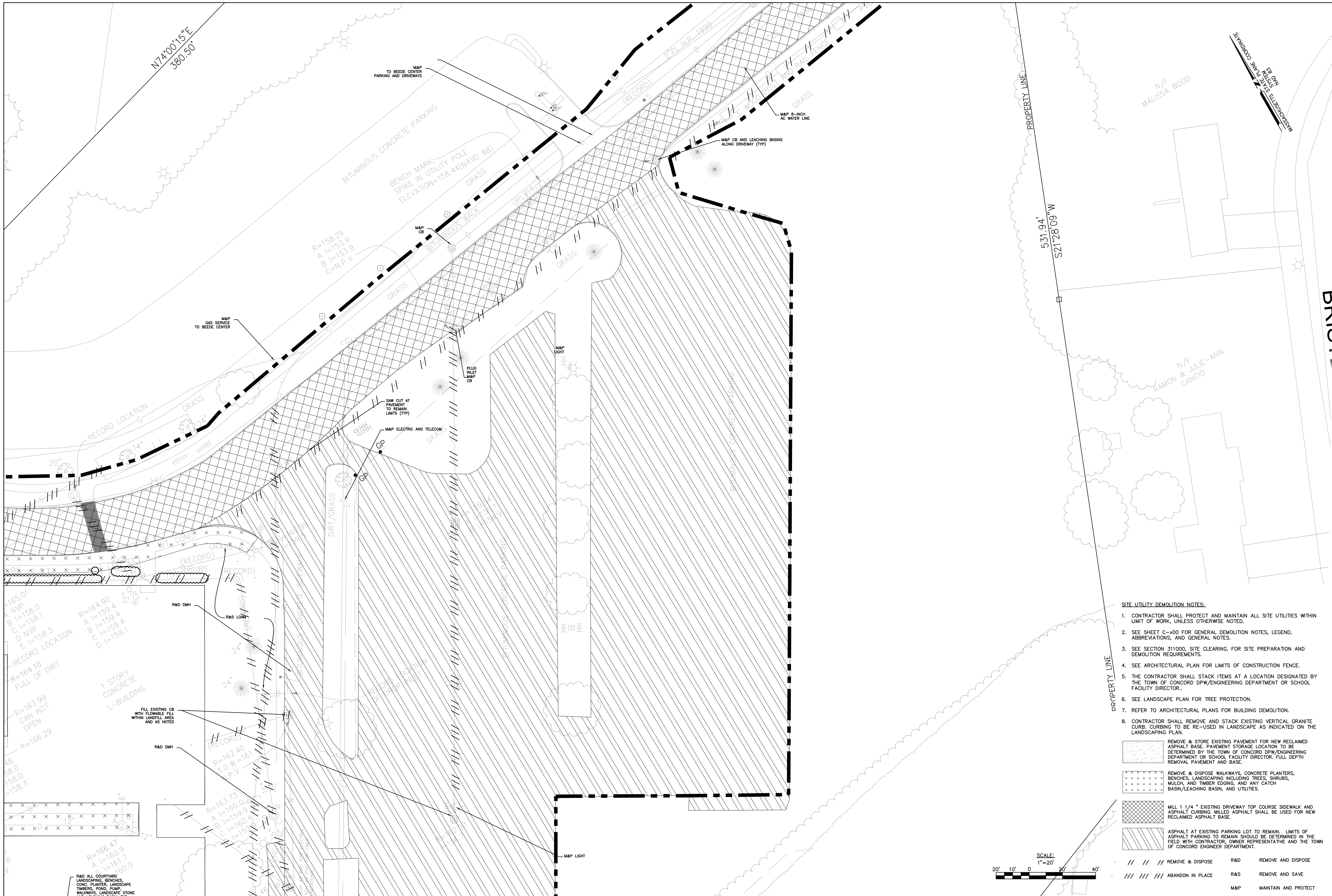
No.	Date	Description

Title:

**SITE DEMOLITION PLAN**

Date: August 15, 2012 Scale: 1" = 20' Drawn: SV Checked: SAB

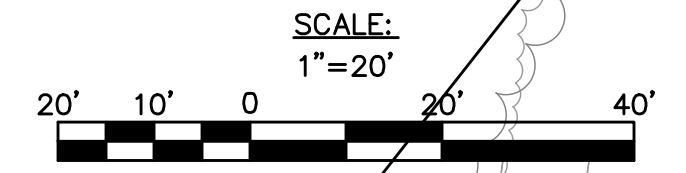
Project No.: 1102.00  
Drawing No.: **C-203**  
© omr architects inc



- SITE UTILITY DEMOLITION NOTES:**
- CONTRACTOR SHALL PROTECT AND MAINTAIN ALL SITE UTILITIES WITHIN LIMIT OF WORK, UNLESS OTHERWISE NOTED.
  - SEE SHEET C-x00 FOR GENERAL DEMOLITION NOTES, LEGEND, ABBREVIATIONS, AND GENERAL NOTES.
  - SEE SECTION 311000, SITE CLEARING, FOR SITE PREPARATION AND DEMOLITION REQUIREMENTS.
  - SEE ARCHITECTURAL PLAN FOR LIMITS OF CONSTRUCTION FENCE.
  - THE CONTRACTOR SHALL STACK ITEMS AT A LOCATION DESIGNATED BY THE TOWN OF CONCORD DPW/ENGINEERING DEPARTMENT OR SCHOOL FACILITY DIRECTOR.
  - SEE LANDSCAPE PLAN FOR TREE PROTECTION.
  - REFER TO ARCHITECTURAL PLANS FOR BUILDING DEMOLITION.
  - CONTRACTOR SHALL REMOVE AND STACK EXISTING VERTICAL GRANITE CURB. CURBING TO BE RE-USED IN LANDSCAPE AS INDICATED ON THE LANDSCAPING PLAN.

- REMOVE & STORE EXISTING PAVEMENT FOR NEW RECLAIMED ASPHALT BASE. PAVEMENT STORAGE LOCATION TO BE DETERMINED BY THE TOWN OF CONCORD DPW/ENGINEERING DEPARTMENT OR SCHOOL FACILITY DIRECTOR. FULL DEPTH REMOVAL PAVEMENT AND BASE.
- REMOVE & DISPOSE WALKWAYS, CONCRETE PLANTERS, BENCHES, LANDSCAPING INCLUDING TREES, SHRUBS, MULCH, AND TIMBER EDGING, AND ANY CATCH BASIN/LEACHING BASIN, AND UTILITIES.
- MILL 1 1/4" EXISTING DRIVEWAY TOP COURSE SIDEWALK AND ASPHALT CURBING. MILLED ASPHALT SHALL BE USED FOR NEW RECLAIMED ASPHALT BASE.
- ASPHALT AT EXISTING PARKING LOT TO REMAIN. LIMITS OF ASPHALT PARKING TO REMAIN SHOULD BE DETERMINED IN THE FIELD WITH CONTRACTOR, OWNER REPRESENTATIVE AND THE TOWN OF CONCORD ENGINEER DEPARTMENT.

- REMOVE & DISPOSE R&D REMOVE AND DISPOSE
- R&S REMOVE AND SAVE
- M&P MAINTAIN AND PROTECT



Architect:

**omr architects inc**

543 Massachusetts Ave, West Acton, MA 01720  
www.omr-architects.com t: 978.264.0160

Consulting Engineer:

**Nitch Engineering**

180 Lincoln Street, Suite 200  
Weston, MA 02157-2002  
T: (617) 338-0063  
F: (617) 338-0172

- Civil Engineering
- Land Surveying
- Transportation Engineering
- Structural Consulting
- Planning
- GIS

Registration:

**DESIGN DEVELOPMENT SUBMISSION**

Project Name and Address:

**Concord-Carlisle Regional High School**  
500 Walden Street, Concord, MA 01742

Issue Submissions:

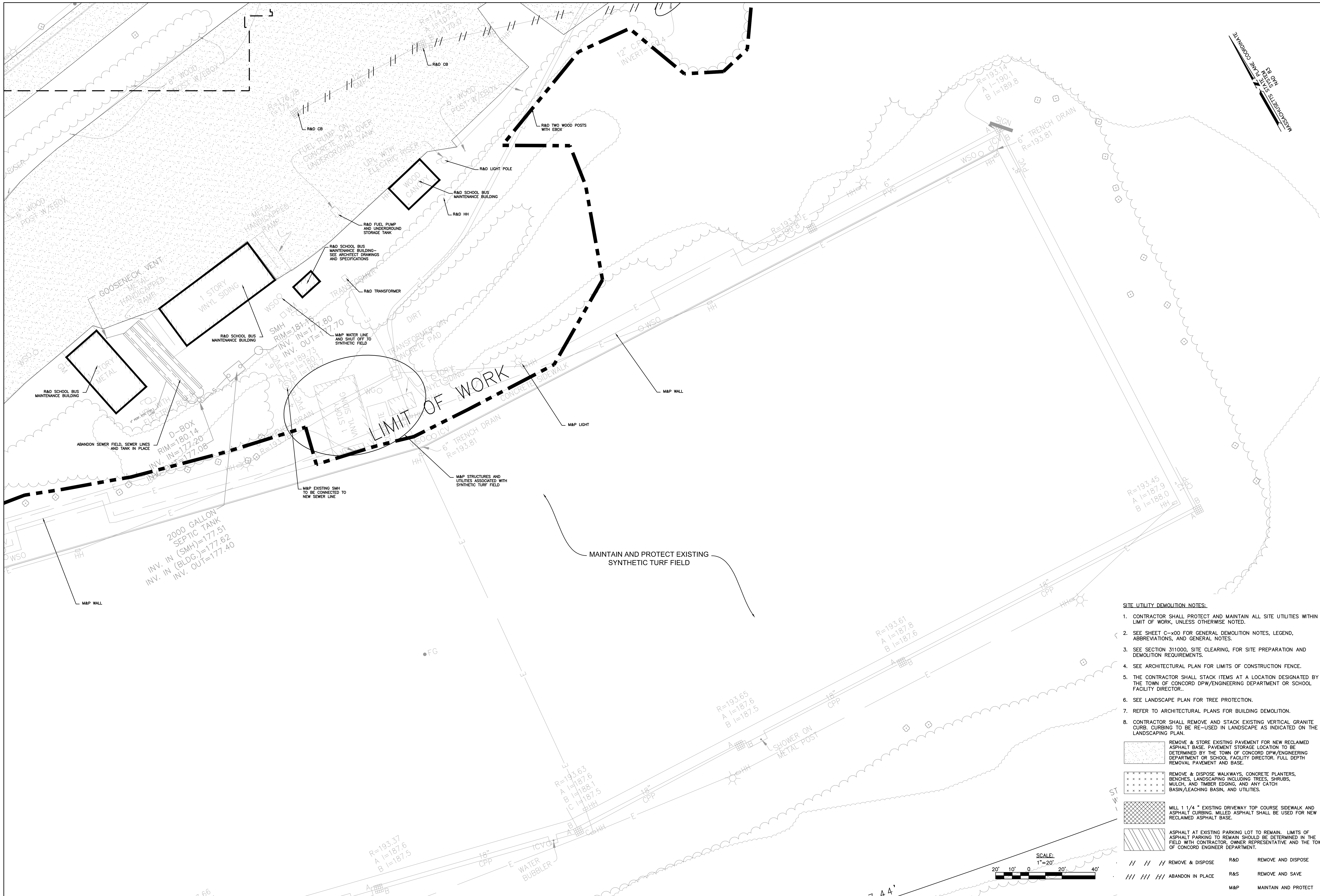
No.:	Date:	Description:

Title:

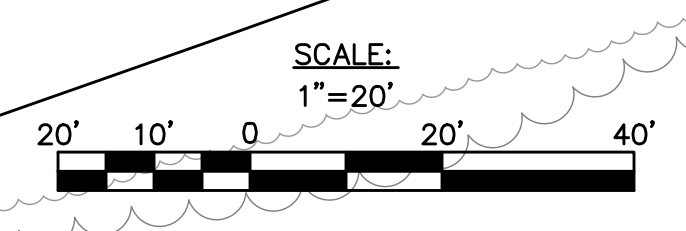
**SITE DEMOLITION PLAN**

Date: August 15, 2012 Scale: 1" = 20' Drawn: SV Checked: SAB

Project No.: 1102.00  
Drawing No.: **C-204**  
© omr architects inc



- SITE UTILITY DEMOLITION NOTES:**
- CONTRACTOR SHALL PROTECT AND MAINTAIN ALL SITE UTILITIES WITHIN LIMIT OF WORK, UNLESS OTHERWISE NOTED.
  - SEE SHEET C-x00 FOR GENERAL DEMOLITION NOTES, LEGEND, ABBREVIATIONS, AND GENERAL NOTES.
  - SEE SECTION 311000, SITE CLEARING, FOR SITE PREPARATION AND DEMOLITION REQUIREMENTS.
  - SEE ARCHITECTURAL PLAN FOR LIMITS OF CONSTRUCTION FENCE.
  - THE CONTRACTOR SHALL STACK ITEMS AT A LOCATION DESIGNATED BY THE TOWN OF CONCORD DPW/ENGINEERING DEPARTMENT OR SCHOOL FACILITY DIRECTOR.
  - SEE LANDSCAPE PLAN FOR TREE PROTECTION.
  - REFER TO ARCHITECTURAL PLANS FOR BUILDING DEMOLITION.
  - CONTRACTOR SHALL REMOVE AND STACK EXISTING VERTICAL GRANITE CURB, CURBING TO BE RE-USED IN LANDSCAPE AS INDICATED ON THE LANDSCAPING PLAN.
- REMOVE & STORE EXISTING PAVEMENT FOR NEW RECLAIMED ASPHALT BASE. PAVEMENT STORAGE LOCATION TO BE DETERMINED BY THE TOWN OF CONCORD DPW/ENGINEERING DEPARTMENT OR SCHOOL FACILITY DIRECTOR. FULL DEPTH REMOVAL PAVEMENT AND BASE.
  - REMOVE & DISPOSE WALKWAYS, CONCRETE PLANTERS, BENCHES, LANDSCAPING INCLUDING TREES, SHRUBS, MULCH, AND TIMBER EDGING, AND ANY CATCH BASIN/LEACHING BASIN, AND UTILITIES.
  - MILL 1 1/4" EXISTING DRIVEWAY TOP COURSE SIDEWALK AND ASPHALT CURBING. MILLED ASPHALT SHALL BE USED FOR NEW RECLAIMED ASPHALT BASE.
  - ASPHALT AT EXISTING PARKING LOT TO REMAIN. LIMITS OF ASPHALT PARKING TO REMAIN SHOULD BE DETERMINED IN THE FIELD WITH CONTRACTOR, OWNER REPRESENTATIVE AND THE TOWN OF CONCORD ENGINEER DEPARTMENT.
- |             |                  |                          |
|-------------|------------------|--------------------------|
| // // //    | REMOVE & DISPOSE | R&D REMOVE AND DISPOSE   |
| /// /// /// | ABANDON IN PLACE | R&S REMOVE AND SAVE      |
| M&P         |                  | M&P MAINTAIN AND PROTECT |



Architect:  
**omr architects inc**  
543 Massachusetts Ave, West Acton, MA 01720  
www.omr-architects.com t: 978.264.0160

Consulting Engineer:  
**Nitach Engineering**  
www.nitacheng.com  
180 Lincoln Street, Suite 200  
Weston, MA 02157-2020  
T: (617) 338-0063  
F: (617) 338-6172

- Civil Engineering
- Land Surveying
- Transportation Engineering
- Surveying Consulting
- Planning
- GIS

Registration:  
**DESIGN DEVELOPMENT SUBMISSION**

Project Name and Address:  
**Concord-Carlisle Regional High School**  
500 Walden Street, Concord, MA 01742

Issue Submissions:	
No.:	Description:

Title:  
**SITE DEMOLITION PLAN**

Date: August 15, 2012    Scale: 1" = 20'    Drawn: SV    Checked: SAB

Project No.: 1102.00  
Drawing No.: **C-205**  
© omr architects inc